

PART OF THE NORTH 1/2 OF SEC. 24, T. 6N., R.1E., S.L.B. & M.  
VALLEY LAKE ESTATES NO. 1

IN WEBER COUNTY

TAXING UNIT: 58

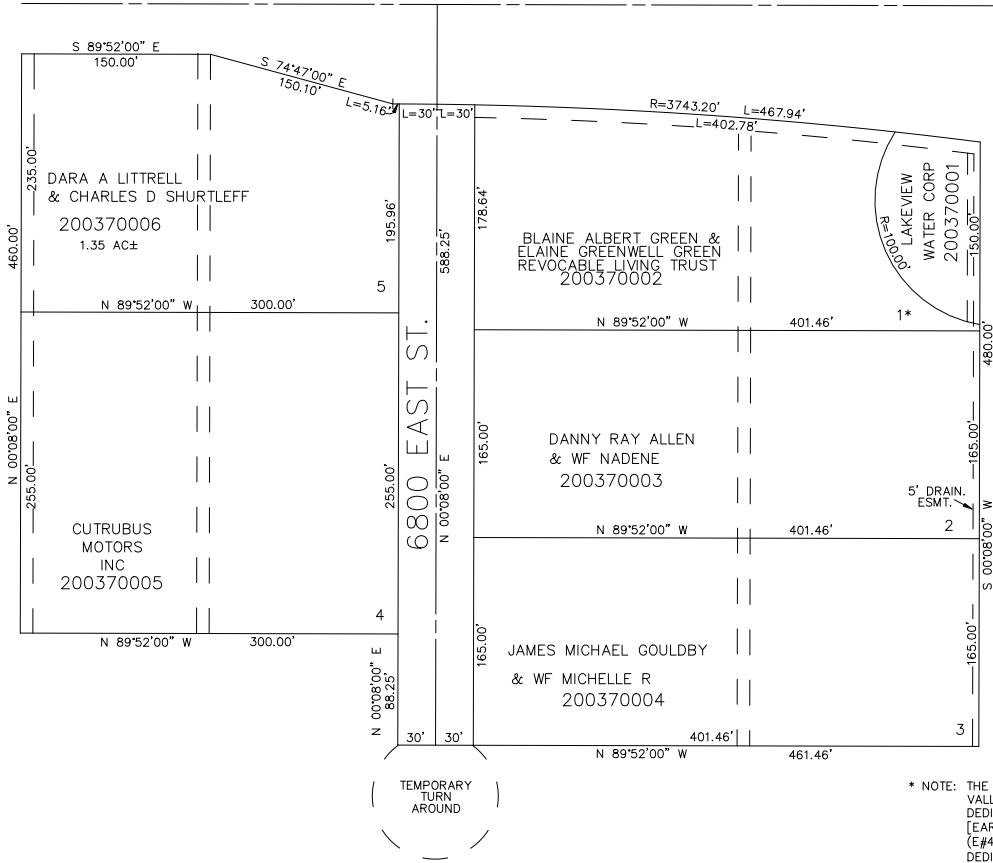
SCALE 1" = 80'

SEE PAGE 13

STATE HIGHWAY

SEE PAGE 38

SEE PAGE 36



SEE PAGE 38

10' UTILITY & DRAINAGE EASEMENTS  
EACH SIDE OF PROPERTY LINES AS  
INDICATED BY DASHED LINES EXCEPT  
AS OTHERWISE SHOWN.

\* NOTE: THE SECTION LAND COVERED BY LOT 1 OF  
VALLEY-LAKE ESTATES NO. 1 HAS NOT BEEN  
DEDICATED AS A LEGAL LOT BECAUSE THEY  
[EARL A JONES & WF ALENE H JONES  
(E#431943 BK 781 PG 249)] DID NOT SIGN THE  
DEDICATION PLAT AT THE TIME OF RECORDING.  
DEDICATOR DID NOT HAVE TITLE TO THE LAND,  
NOR HAVE EASEMENTS IN SAID LOT 1 GRANTED.

ALSO NOTE: LOT 1 ASSESSED AS  
SECTION LAND.

FOR COMPLETE ENG DATA SEE  
ORIGINAL DEDICATION PLAT IN  
BOOK 13, PAGE 99 OF RECORDS.